



INTRODUCING THE NEW CS 7600



The world's 1st intelligent imaging plate system

Coming together
to improve your
workflow

FEATURING NEW
SCAN & GO
TECHNOLOGY



Introducing the CS 7600 Digital Radiography System

Featuring exclusive **Scan & Go** technology, the CS 7600 is the first intelligent plate system that is designed to make the entire dental imaging process easier, more secure, and more efficient.



Key benefits of the CS 7600

- Superb image quality in as little as 5 seconds
- Compact unit can be used chairside or centrally
- Fully secure and automated workflow
- Optimized workflow for multi-users and multi-patients
- As easy to use as film—with all the benefits of digital





Carestream
DENTAL

SUPERIOR WORKFLOW



The advantages of imaging plate technology

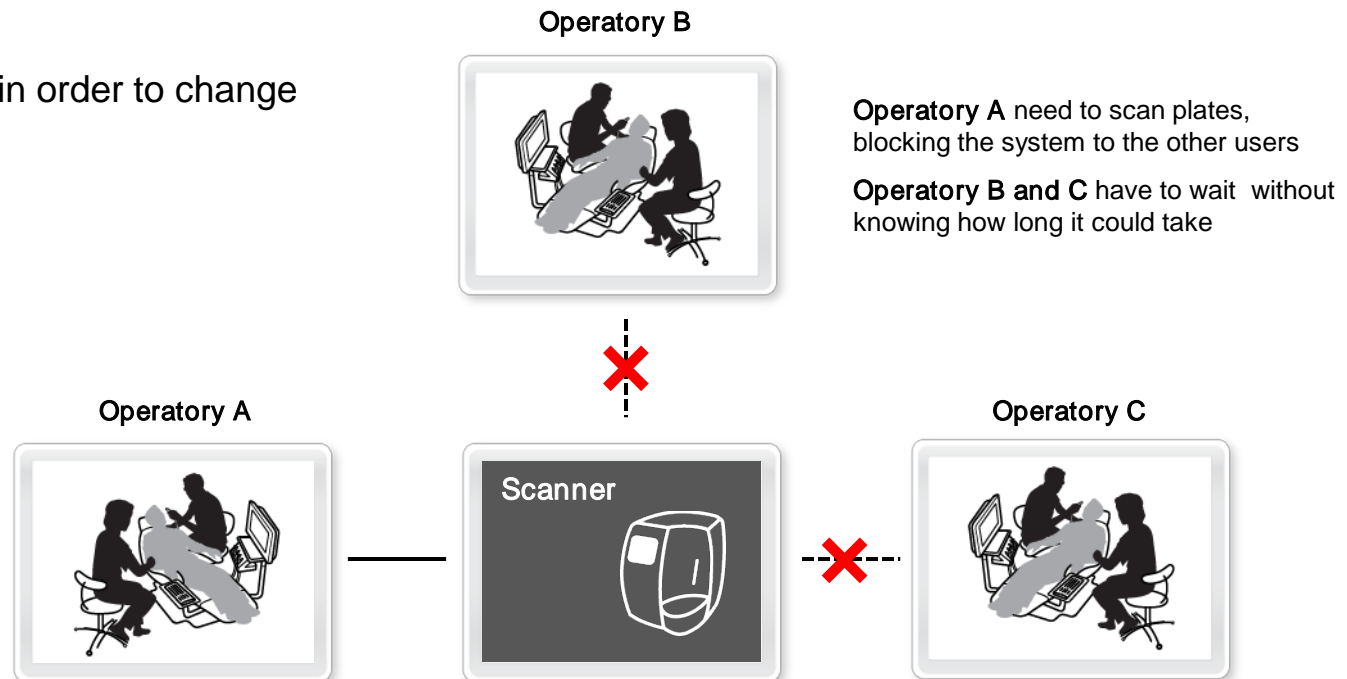
The best of both worlds

- Familiar, film-like workflow
 - Minimal disruption to current working habits
 - No changes required when taking radiographs
 - Multiple exam rooms can share one scanner
 - Leverage existing x-ray equipment and positioners
- With all the advantages of digital technology
 - Fast and accurate results
 - Eliminates need for darkroom and chemicals
 - Easy to handle, share, and store digital images



Limitations of current systems

- Systems unable to process more than one patient at a time
- Need to block the system when scanning plates
- Users must wait when others are scanning plates
- Increases risk of image mix ups between patients
- Risk of loss of images
- Multiple clicks required in order to change patient files



Exclusive Scan & Go technology

NEW
SCAN & GO
TECHNOLOGY

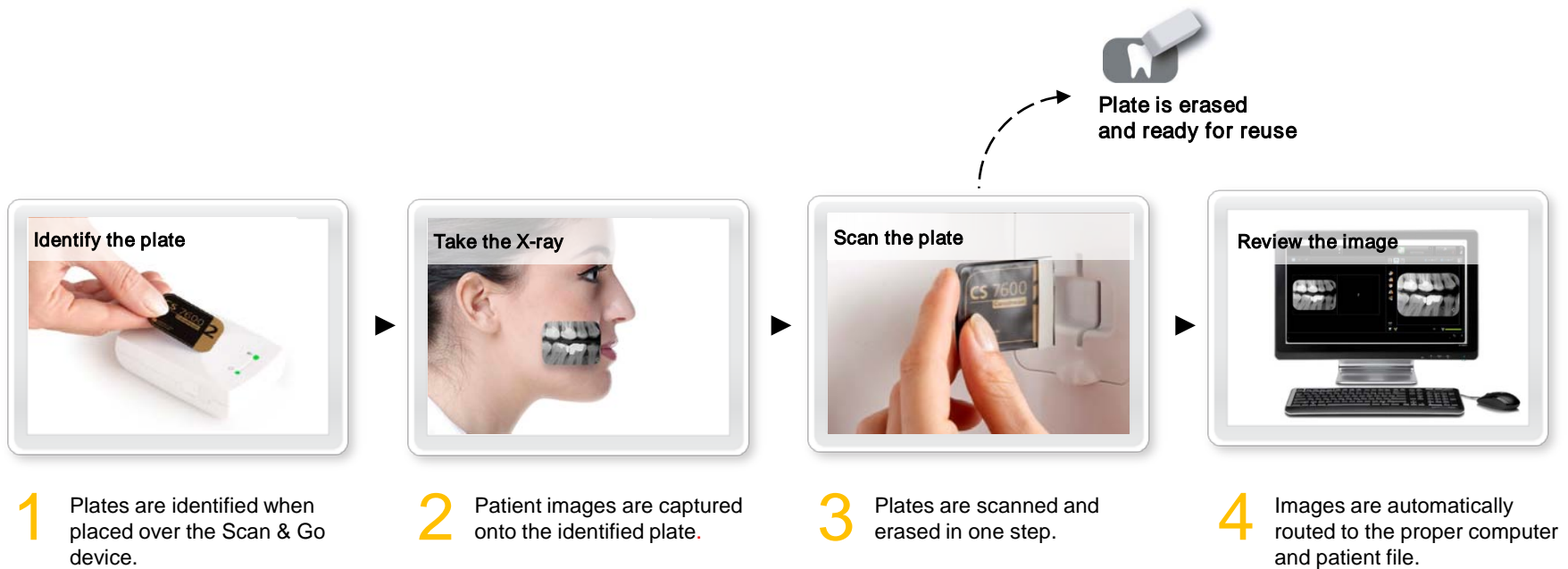
- Plates are identified electronically prior to the exam
- With one tap of the plate, both the patient's and practitioner's information is automatically embedded into the plate and saved



Scan & Go workflow*

NEW
SCAN & GO
TECHNOLOGY

- Once identified, plates are automatically recognized during scanning
- Images are automatically routed and sent to the appropriate computer and patient file with minimal user interaction required



Truly designed for multiple patients and multiple users

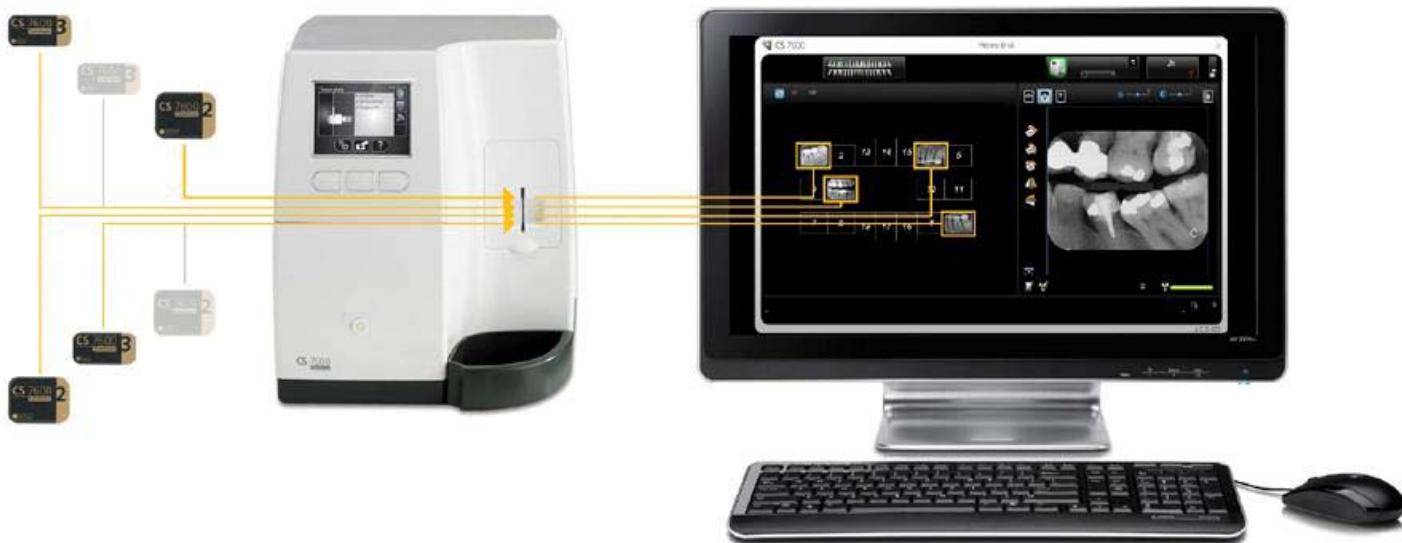
- Since the CS 7600 is always ready to use, there's no need to reserve and block the CS 7600 when scanning a plate
- Multiple users can use the system at the same time –without waiting in a queue
- Plates can be scanned in any order with minimal user interaction
- Eliminates risk of image mix ups and confusion



Streamlined FMS procedures

NEW
SCAN & GO
TECHNOLOGY

- Scan and display an FMS with minimal user interaction required
- Regardless of the order in which plates are scanned, images are mounted automatically
- Templates automate routine FMS examinations



Built-in memory

- Allows scanning even if a patient's file is unopened, the network fails, or the or the computer is switched off
 - When used with the Scan & Go option, images are automatically retrieved and sent to the appropriate computer once the network is restored
 - If the Scan & Go feature is not used, simply drag and drop images to retrieve
- Prevents data loss

Image
memory



Network
connection
indicator





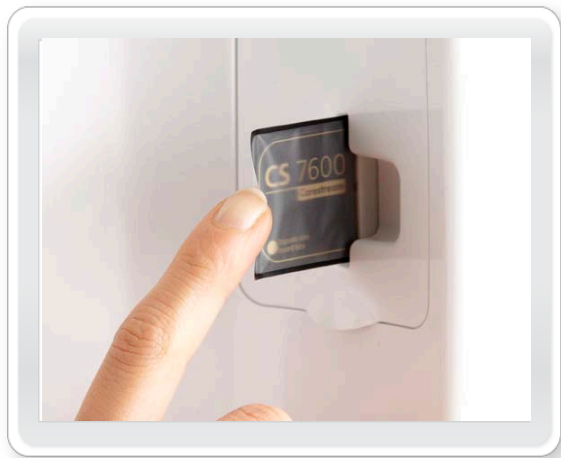
Carestream
DENTAL

FAST AND EASY TO USE



Fast results

- First image is ready to view in as little as five seconds
- Scan and display a full mouth series (FMS) in just minutes
- Three scanning modes available to prioritize performance by speed or image resolution



5 sec.



User-friendly operation

- Built-in color monitor provides clear, easy-to-follow instructions
- Unit automatically detects when a plate is inserted incorrectly, reducing risk of lost and/or low-quality images
- Real-time image preview available directly on the monitor of the unit
- Plates are automatically erased after each scan



Film-like workflow

- Thin, flexible and wireless plates
- Plates are as easy to position as film
- Plates available in same sizes as film (0 to 4) to address all examinations and ensure comfort of patients
- Plates can be used with film positioners



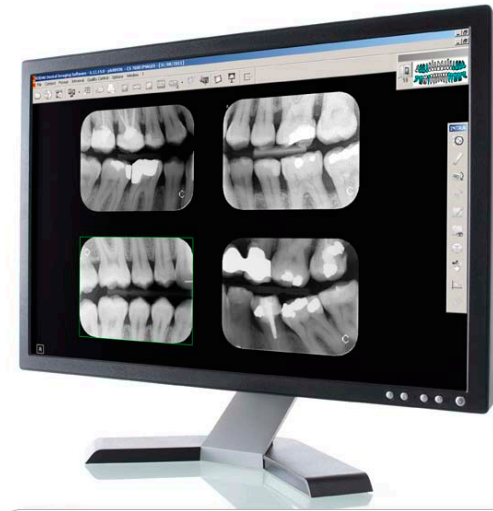
Intuitive user interface

- User interface is easy to learn and use
- Fast and intuitive image set
- Interface designed for both single and multiple image acquisition
- Auto-growing mode reduces number of clicks required per task
- Acquisition interface includes most popular image processing tools
- Integrates with Carestream Dental Imaging Software



Simple, yet powerful imaging software

- Carestream Dental Imaging Software
- Robust program features a number of user-friendly image processing tools
- Images can be shared easily with patients and colleagues alike



One -click
image enhancement



Measurements



Access to all patient images



Carestream
DENTAL

SUPERB IMAGE QUALITY



Superb image quality

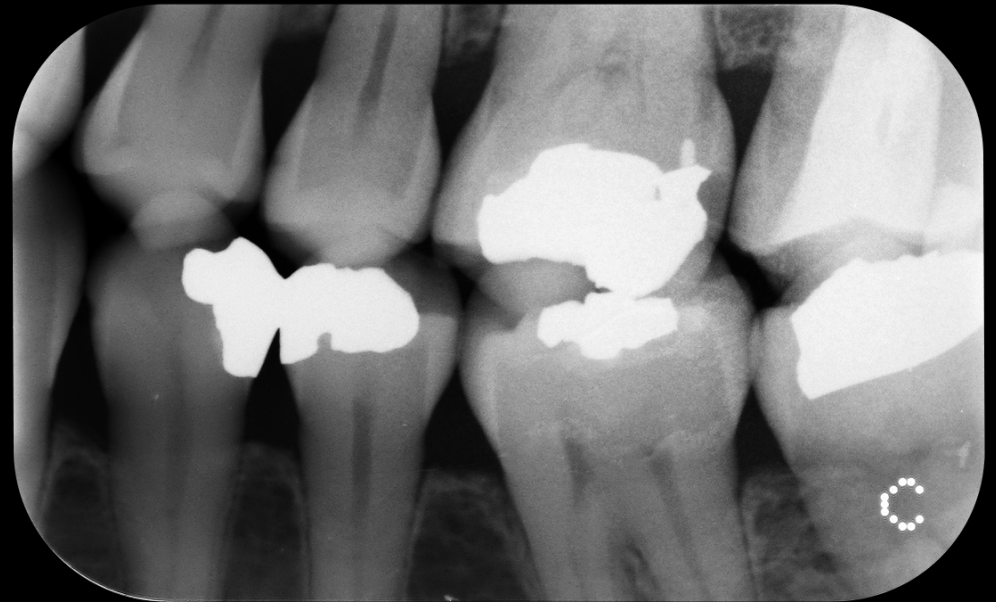
- High-resolution images ensure confident diagnoses
- True resolution up to 17 LP/mm
- New plate technology delivers consistently high-quality images
- Wide dynamic range reduces risk of under- or overexposure



Clinical results

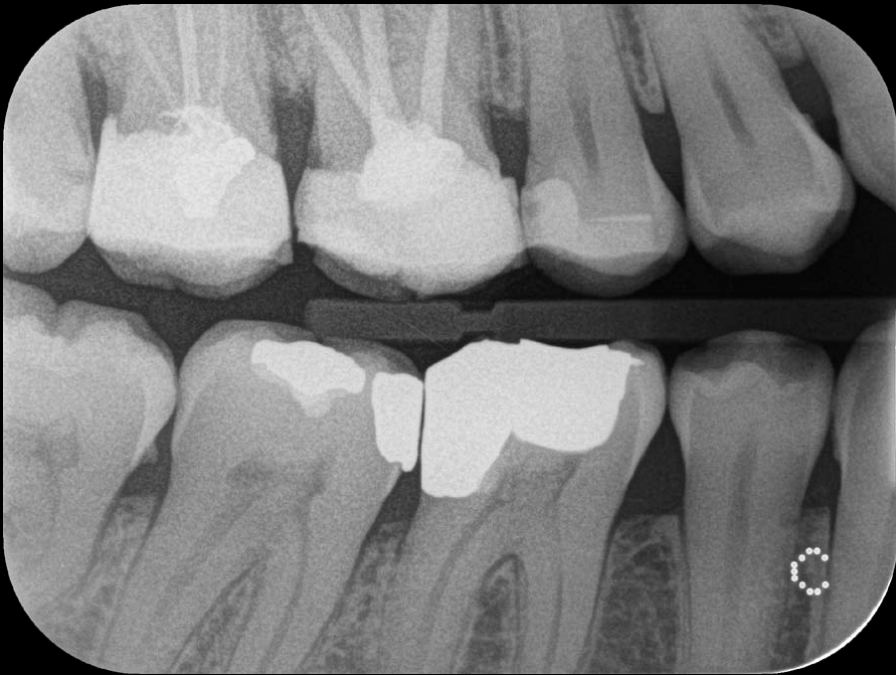


Size 1 image,
Periapical



Size 1 image,
Bitewing

Clinical results



Size 2 image,
Bitewing



Size 2 image,
Bitewing

Clinical results



Size 4 image,
Occlusal



Carestream
DENTAL

EASY TO INTEGRATE



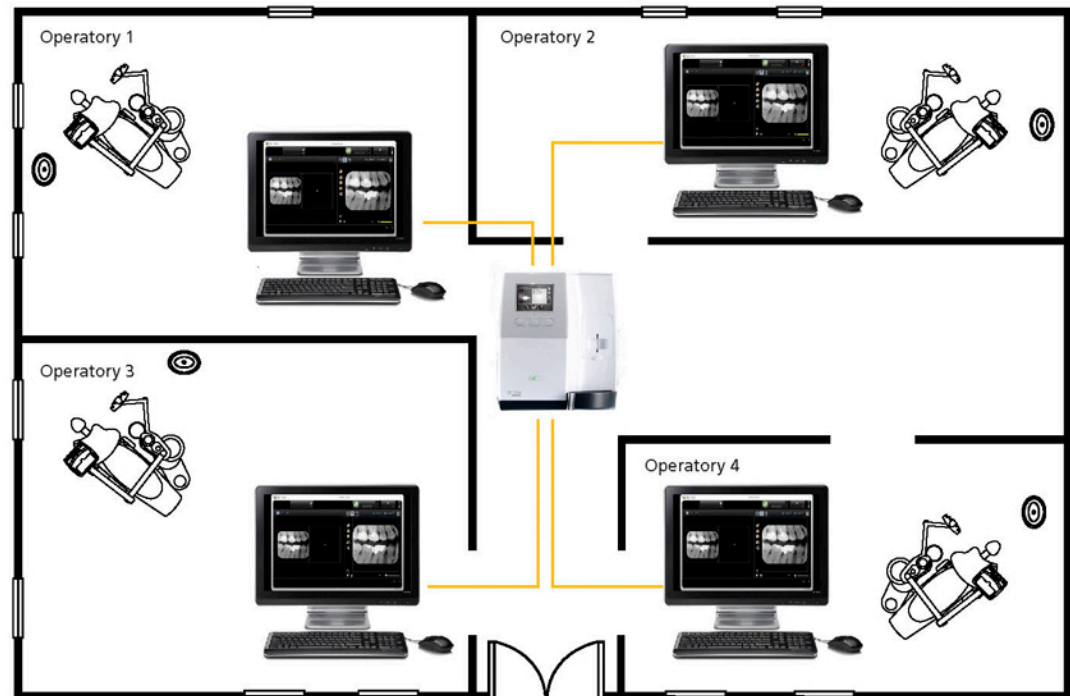
Compact design

- Compact unit can be used chairside or centrally
- Ideal for both small and large practices
- Can be used in normal, everyday lighting conditions
- Unit can be installed on a desktop or mounted to a wall



Integrates easily into any practice

- Built-in Ethernet connectivity
- Immediate access to images from any PC
- No need to have a dedicated computer located next to the unit
- Economical solution for multi-operator practices



Full set of accessories

Smart Plates



Hygienic sheaths



Scan & Go



Storage box



Technical specifications

Imaging plate sizes Height x width (mm)	Size 0 – 22 mm x 35 mm Size 1 – 24 mm x 40 mm Size 2 – 31 mm x 41 mm Size 3 – 27 mm x 54 mm Size 4 – 57 mm x 76 mm
Imaging plate scanning resolution* - Super-high resolution mode - High-resolution mode - High-speed mode	17 LP/mm 14 LP/mm 8 LP/mm
Theoretical resolution	Up to 25 LP/mm
Image transfer	Secured workflow with Smart Plate technology
Plate erasing	Automatic
Scan time	As little as 5 seconds for one image
Connectivity	Ethernet
Display	3.5" color LCD display
Power supply	100–240 V (ac), 50/60 Hz, 1.5 A
System dimensions (without bracket)	266.5 mm (H), 236.6 mm (W), 259.4 mm (D)
Weight	Approx. 6 kg

